

# Woodlands Weekly



office@woodlands.kent.sch.uk  
www.woodlands.kent.sch.uk

Friday 4<sup>th</sup> January 2019  
Newsletter No. 16

Happy New Year!

We started the term with a 'rubbish' assembly (and no, not a terrible assembly, but an assembly about waste). After the normal Priestley Christmas, I was horrified by the amount of rubbish that we accumulated – and I brought some of it into school to show the children. They helped to come up with some excellent ideas about how to reduce the amount of waste that we have and so keep our country beautiful.

We decided to:

- try not to use plastic straws (either by not using a straw at all, or by using paper or reusable bamboo)
- try not to use plastic bags (or keep reusing)
- try not to buy water in bottles but fill a reusable bottle from the tap
- eat less Happy Meals (not only does this reduce unwanted toys but is also healthier!!)

Children in Y2 were then horrified to discover that our own school milk comes in unrecyclable cartons with plastic straws and our fruit is sometimes packaged in plastic too. I have asked them to write to these companies asking them to change their packaging. We will see what happens...

### Christmas Donations update

We have now counted your very generous donations at the end of Term 2 which will be split between our two chosen school charities (Juvenile Arthritis and the NSPCC) and school music. The grand total came in at £888. Thank you.



### **Severe Weather Information!**

May we remind you of the ways in which we communicate with parents in the event of severe weather, for example heavy snow. We always make every effort to open the school and we would only close if it is no longer safe for staff or pupils on site. However if we have to close, we publicise this in several ways:

- An emergency news item on the school website
- Parentmail - texts and e-mails sent to all parents

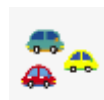
- Kent Closures website ([www.kentclosures.co.uk](http://www.kentclosures.co.uk))
- KMFM, BBC Radio Kent or Heart FM will also publicise closures
- ***On such occasions, please only telephone the school in an emergency. Thank you.***

### **Ways you can help:**

When accessing the site on icy or snowy days, please keep to pathways which have been cleared and gritted around the school site.

- Children will need to have warm coats, hats and gloves as well as wellington boots (or similar) so that they can play outside - as we like to make the most of the snow.
- It is possible that you would need to provide a packed lunch, if the kitchen team are unable to cook – but we would always let you know if this is the case.
- Please make sure that if you are working some distance from the school, you have a back-up plan in place should we require to close early.

Please access [www.kent.gov.uk/winter](http://www.kent.gov.uk/winter) for more information about gritting routes etc. so that you can plan your journey.



### **School Car Park**

Please remember that the school car park is **not** open for dropping off and collecting children unless you have specific permission from Mrs Priestley.

### **Attendance News**

Year Group	% Attendance
R	94.8
1	95.6
2	97.8
3	98.0
4	95.1
5	96.9
6	91.8

A fabulous start for Y2 and Y3. Y6 seem rather low this week – let's aim for better from Monday.



### **World Book Day – Thursday 7<sup>th</sup> March 2019**

#### **Annual ‘Read In’ – Thursday 7<sup>th</sup> March 2019 – 6 to 7 pm**

We will be celebrating World Book Day at Woodlands on Thursday 7<sup>th</sup> March 2019. Children are encouraged to come to school dressed up as one of their favourite book characters. We are looking forward to sharing lots of book related fun during the day.

In the evening children are invited to return to school with a parent or carer to enjoy our annual ‘read in’. This will start at 6pm with hot chocolate and a whole school story in Oak Hall. After this, members of staff will be residing in Oak building to read bedtime stories until 7pm. If children would like to wear their pyjamas they are very welcome to do so. Children need to be accompanied by an adult for this event.

#### **Date for Parent Forum – Thursday 10<sup>th</sup> January 2019 at 6.30pm**

Each term we run a Parent Forum linked to a subject either requested by parents – for example, last year we ran a forum around the topic of ‘Homework’ - or around a topic on which we would like your input. All parents are invited to attend and take part in what is often an interesting and lively debate. In January, Mrs Hardcastle and Mrs Tarrant-Blick are leading the discussion around **‘Working Together to Support Anxiety’**. Please email the school office if you would like to attend ([office@woodlands.kent.sch.uk](mailto:office@woodlands.kent.sch.uk)) so that we have some idea about numbers.

A parent correctly spotted that support can mean ‘encourage’! We mean the opposite of this – perhaps we shall refer to the session as, **‘Working Together to Reduce Anxiety’!**

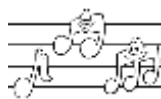


In Term 3, clubs run by staff will start again in the **second full week** of term (w/c 14<sup>th</sup> January 2019).

However, all clubs run by Mrs Jones will resume in the first full week back (w/c 7<sup>th</sup> January 2019).

#### **Admissions to school in September 2019**

If your child is due to start school in September 2019 you need to make an online application for a place at [www.kent.gov.uk/ola](http://www.kent.gov.uk/ola) and a booklet explaining the admissions procedure is also available online. **The closing date for applications is Tuesday 15<sup>th</sup> January 2019.**



#### **Music News**

Music clubs run by Mrs Jones start again next week: Senior Choir on 9<sup>th</sup>, and School Band, Recorders, Ukulele Club and Junior Choir on Thursday 10<sup>th</sup>.

Senior Choir are looking forward to their trip to the O2 arena on Thursday 31<sup>st</sup> January. Please note that the lunchtime clubs and after school choir will be cancelled that

day, but the school band will run as usual. Senior Choir will be open for new members from 6<sup>th</sup> February.

#### **English National Opera launches free tickets for Under 18's**

English National Opera (ENO) has just announced that anyone aged under 18 will get free tickets to ENO productions on Saturdays. The tickets will be for seats in the Balcony and be available for any or all of the 11 Saturday performances in the Spring 2019 season in the London Coliseum. This scheme dramatically expands ENO's audience engagement strategy and forms part of the company's central mission to ensure the art form is accessible to everyone.

Children under the age of 16 will need to be accompanied by an adult. However, as part of the initiative, adults who pay full price for a balcony ticket can bring up to four children under 16 free of charge. Teachers bringing school groups can accompany up to 10 children under 16 and free of charge. Children aged 16 and 17 can be unaccompanied, and can book one ticket to each performance free of charge.

The applicable performances are: Akhnaten (23 Feb, 2 Mar); La Bohème (2, 9 & 16 Feb); The Merry Widow (9 Mar, 13 Apr); The Magic Flute (16 & 23 Mar, 6 Apr) and Jack the Ripper: The Women of Whitechapel (30 Mar).

Bookings for free tickets can be made via the ENO Box Office phone line 020 7845 9218.

#### **PTA News**

Happy New Year from the PTA. We hope you all had a lovely break and Father Christmas made a special visit!

This term is a lot quieter than the run up to Christmas, but we do have the Comedy Night on 1st February for a grown up night out. The last 2 years have seen some great comedians so it promises to be a fun night out. We will, of course, have our cash bar on hand too. Book your tickets via ParentMail or booking forms via the school office.

#### **COMEDY NIGHT - 1ST FEBRUARY 2019**

New Year, new laughs! We are holding our comedy night again at the beginning of February. This has been a very popular event for the last 2 years with a high standard of comedians currently working the London comedy circuit. Tickets are £12.50 each and available on ParentMail or via the booking form. If you would like to sit together on a table, please email details to: [woodlandscomedynight@gmail.com](mailto:woodlandscomedynight@gmail.com)

#### **ONLINE FUNDRAISING**

##### **EASY FUNDRAISING**

Please use this link before visiting retailers' websites: <https://www.easyfundraising.org.uk/causes/woodlandsfriends/>

##### **AMAZON SMILE**

Please use this link to join your account with Amazon Smile. <https://smile.amazon.co.uk/ch/1090106-0>

#### **DATES FOR YOUR DIARIES:**

**COMEDY NIGHT - 1ST FEBRUARY 2019**

**KS1 DISCO - FRIDAY 26TH APRIL 2019**

**KS2 DISCO - FRIDAY 7TH JUNE 2019**

CLOTHING COLLECTION - FRIDAY 17TH MAY 2019  
 SUMMER FAIR - SATURDAY 22ND JUNE 2019  
 FIREWORKS NIGHT - SATURDAY 9TH NOVEMBER 2019

**Community News**

**SAMA SOUTHEAST KIDS KARATE** at Woodlands Primary School starting Thursday 10<sup>th</sup> January 5-6pm. Register for your first lesson on our website or turn up on the day. Samasoutheast.co.uk/samakarate.com, 01444 461889/07876617115.

**BBALLIN.** Basketball skills school at Hayesbrook School, every Friday – Years 4, 5 & 6 5.30 – 7pm and Years 7, 8 & 9 7 – 8.30pm. Free trial period (2 sessions for new starters). To register or for info email [bballintd@gmail.com](mailto:bballintd@gmail.com). Call/WhatsApp coach Stephen on 07932835327 or coach Herbie on 07748413262.

**Letters Home**

All CDC Parent taster flyer

**Diary Dates**

**2019**

10<sup>th</sup> Jan Parent Forum 6.30pm  
 31<sup>st</sup> Jan Senior Choir at Young Voices, O2  
 1<sup>st</sup> Feb PTA Comedy Night (tickets on PMail)  
 8<sup>th</sup> Feb YR trip to The Chatham Historic Dockyard  
 7<sup>th</sup> Mar World Book Day  
 7<sup>th</sup> Mar Annual 'Read In' 6-7pm  
 21<sup>st</sup> Mar Y6 SATS Information Evening and Isle of Wight Meeting 7pm in Acorn Hall  
 26<sup>th</sup> April KS1 Disco  
 17<sup>th</sup> May Clothing Collection  
 7<sup>th</sup> June KS2 Disco  
 22<sup>nd</sup> June Summer Fair  
 9<sup>th</sup> Nov Fireworks Night

**Dates/times which have been changed or added**

**Class Assemblies – 2.45pm**

17 Jan 5 Nutmeg  
 24 Jan 3 Oak  
 31 Jan 3 Yew  
 12 Mar 1 Hazel  
 19 Mar 1 Juniper  
 26 Mar 1 Willow  
 4 Apr R Magnolia  
 9 May 5 Damson  
 23 May R Cherry  
 13 Jun 2 Elm  
 20 Jun R Tulip  
 27 Jun 2 Palm  
 4 Jul 2 Cedar

**Term Dates**

15<sup>th</sup> February Term Ends  
 25<sup>th</sup> February Inset Day  
 26<sup>th</sup> February Term Starts  
 5<sup>th</sup> April Term Ends  
 23<sup>rd</sup> April Term Starts  
 6<sup>th</sup> May Bank Holiday  
 24<sup>th</sup> May Term Ends  
 3<sup>rd</sup> June Term Starts  
 19<sup>th</sup> July Term Ends

22 <sup>nd</sup> July	Inset Day
23 <sup>rd</sup> July	Inset Day
2 <sup>nd</sup> Sept 2019	Term Starts
18 <sup>th</sup> Oct	Term Ends
28 <sup>th</sup> Oct	Term Starts
18 <sup>th</sup> Dec	Term Ends
6 <sup>th</sup> Jan 2020	Term Starts
14 <sup>th</sup> Feb	Term Ends
24 <sup>th</sup> Feb	Term Starts
1 <sup>st</sup> Apr	Term Ends
16 <sup>th</sup> Apr	Term Starts
4 <sup>th</sup> May	Bank Holiday
22 <sup>nd</sup> May	Term Ends
1 <sup>st</sup> June	Term Starts
22 <sup>nd</sup> July	Term Ends

(Please note that Inset Days for the academic year Sept 2019 to July 2020 have yet to be confirmed)